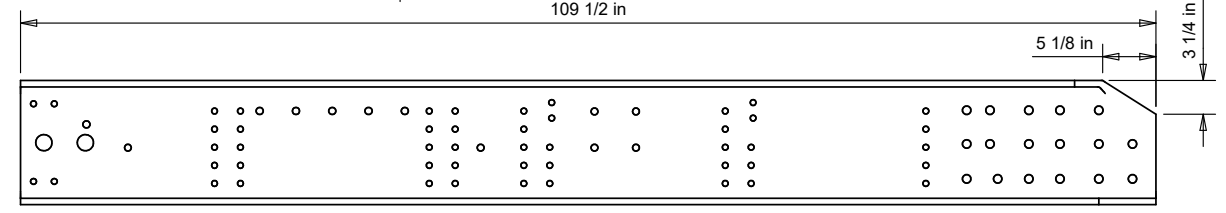
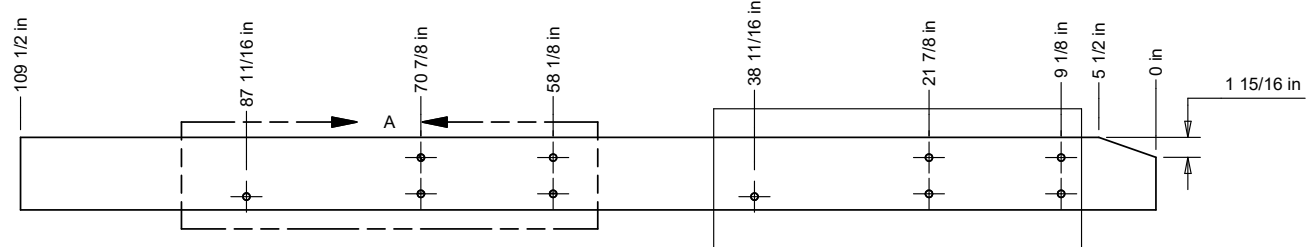


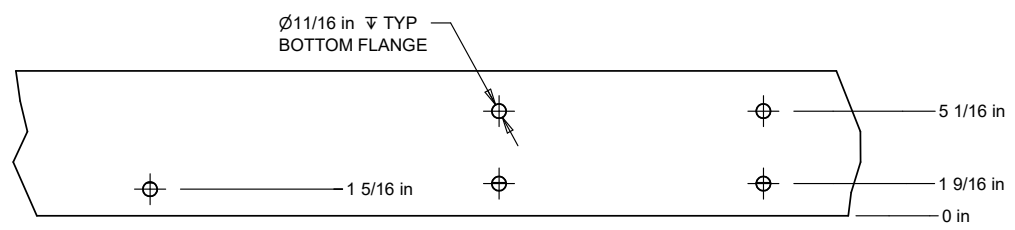
TOP VIEW
TOP FLANGE
SCALE 1 / 12



***VIEW B-B**
SCALE 1 / 12



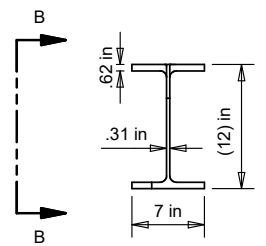
BOTTOM VIEW
SCALE 1 / 12



DETAIL A
SCALE 1 / 6

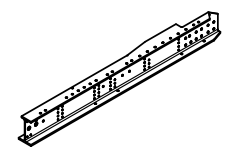
DETAIL IS TYPICAL FOR TWO SUSPENSION LOCATIONS HOLES THRU BOTTOM FLANGE ONLY

REVISION HISTORY			
REV	DESCRIPTION	DATE	APPROVED
1	ADDED DRAIN HOLE	2021-02-04	CB
2	ADDED RAW MAT #. WAS 25FT LENGTHS	2021-08-10	CB



FRONT
SCALE 1 / 12

ALCOA SHAPE 234272



ISOMETRIC VIEW
SCALE 1 / 50

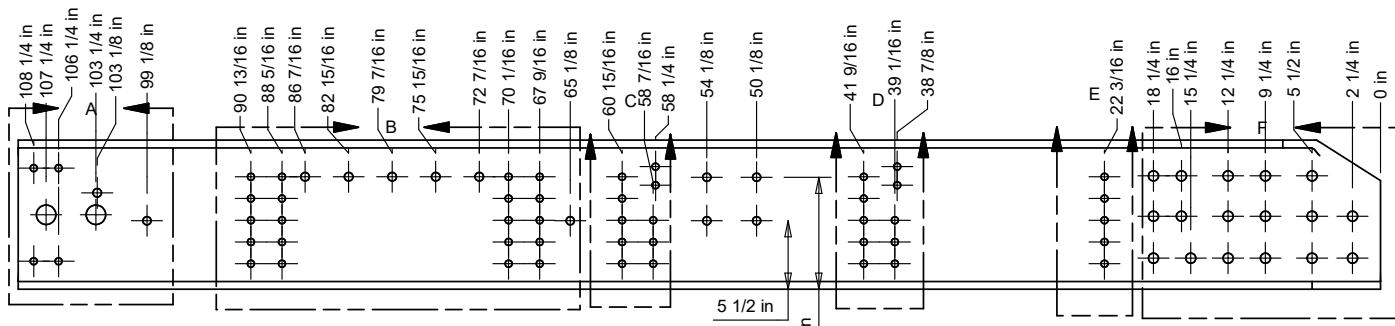
PART IS NOT GOING TO UNDERGO POST COATING. ALL SURFACES BUT BOTTOM FLANGE AS SEEN IN BOTTOM VIEW TO BE KEPT SCRATCH FREE TO PREVENT POST BUFFING

ADAPTED FROM: P0002599

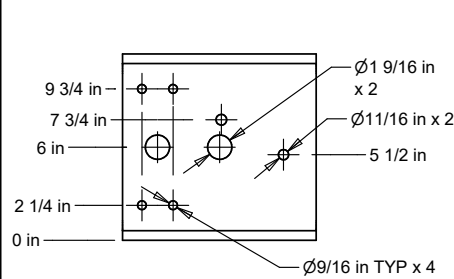


ADVANCE
ENGINEERED
PRODUCTS LTD.

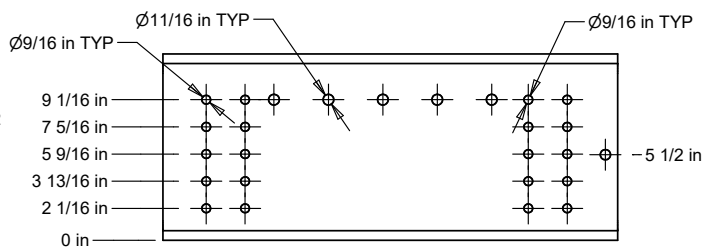
TOLERANCE UNLESS SPECIFIED	MATERIAL SAP# 10066822	MATERIAL SAP DESCRIPTION I BEAM ALUM 12" X 7" X .310 X 20FT 6061 T6
ANGLES ± 1°	STATE Released	TITLE
INCHES ± 1/16"	ENGINEER FR	-BEAM C/S B-REAR ALUM 6061-T6 12"x 7" x 109 1/2" LG
METRIC ± 1.6mm	DRAWN BY FR	PART NUMBER
	DATE 2020-12-14	P0014060
	1 of 2 SHEETS	REV 2
	SHEET SIZE B	



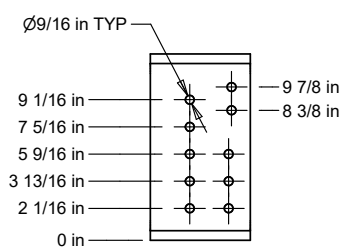
CURBSIDE VIEW
SCALE 1 / 10



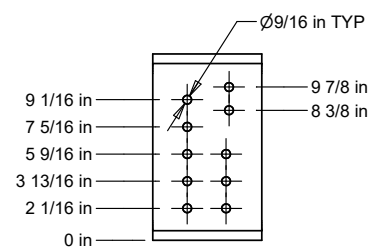
DETAIL A
SCALE 1 / 8



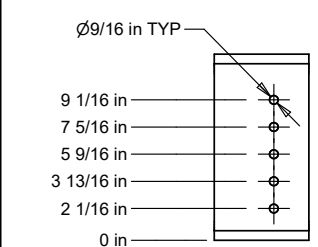
DETAIL B
SCALE 1 / 8



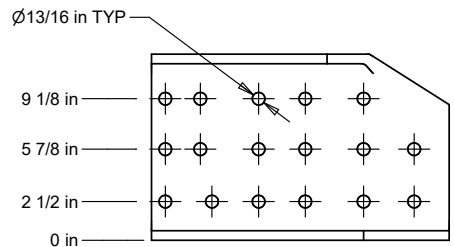
DETAIL C
SCALE 1 / 8



DETAIL D
SCALE 1 / 8



DETAIL E
SCALE 1 / 8



DETAIL F
SCALE 1 / 8

ADAPTED FROM: P0002599

	TOLERANCE UNLESS SPECIFIED	MATERIAL SAP# 10066822	MATERIAL SAP DESCRIPTION I BEAM ALUM 12" X 7" X .310 X 20FT 6061 T6
	ANGLES ± 1°	STATE Released	TITLE
	INCHES ± 1/16"	ENGINEER FR	-BEAM C/S B-REAR ALUM 6061-T6 12"x 7" x 109 1/2" LG
	METRIC ± 1.6mm	DRAWN BY FR	PART NUMBER
ENGINEERED PRODUCTS LTD.	DATE 2020-12-14	SHEET SIZE B	P0014060
	2 of 2 SHEETS		REV 2